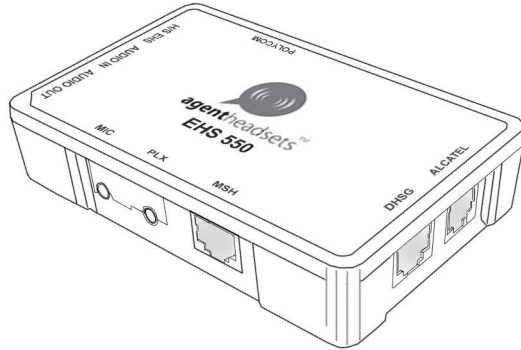


Agent EHS 550

DECT Connection Box

SET-UP GUIDE



For use with Alcatel deskphones

What's in the box:

Agent EHS 550



Adhesive strip
(to fix EHS 550
to your desk)



Cable A



Cable F



Pin H



Ringer
Sensor

You will also need:

Alcatel
deskphone



Agent W860
or W880



Cable B
(supplied
with your
Agent
W860 or
W880)



Compatibility guide:

The Agent EHS 550 is compatible with the following Alcatel models:

- IP Touch 4028
- IP Touch 4029
- IP Touch 4038
- IP Touch 4039
- IP Touch 4068

Other manufacturers:

Other versions of this product are available for the following manufacturers:

Aastra



Avaya



Panasonic



Polycom



Siemens

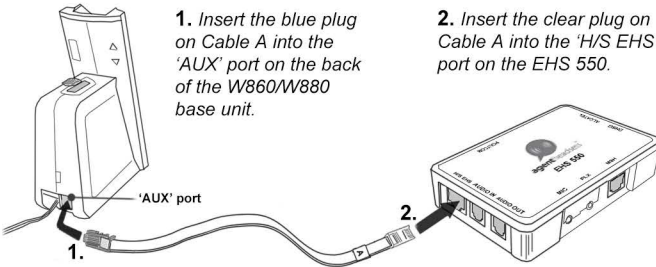


Toshiba



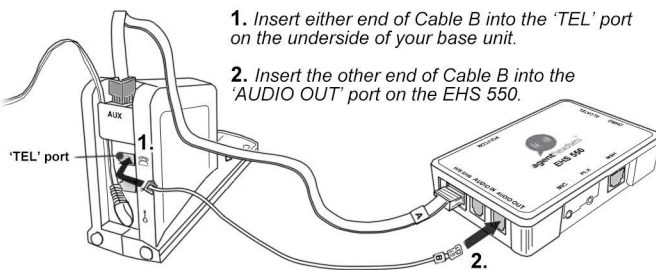
To check which handsets from each manufacturer are compatible, please visit the accessories section of our website: www.agentheadsets.com

Step 1: Connect Cable A

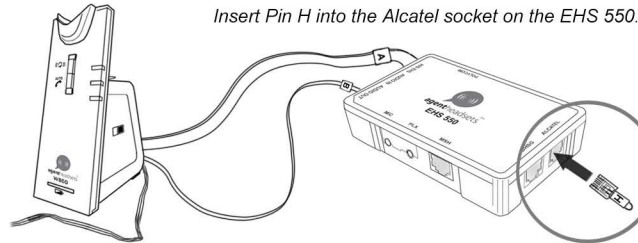


Step 2: Connect Cable B

Cable B is supplied with your Agent W860 or W880.

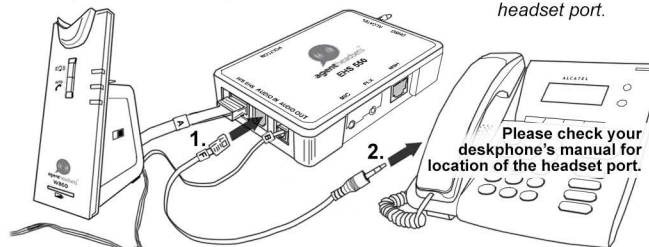


Step 3: Insert Pin H



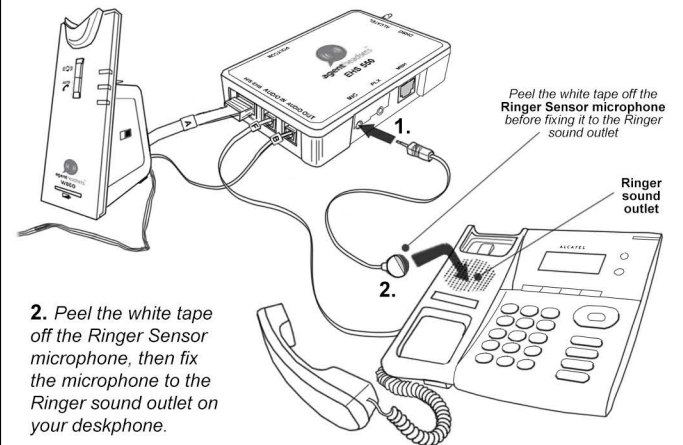
Step 4: Connect Cable F

1. Insert the RJ9 plug on Cable F into the 'AUDIO IN' port on the EHS 550.
2. Plug the 3.5mm audio jack on Cable F into your Alcatel deskphone's headset port.



Step 5: Connect the Ringer Sensor

1. Insert the audio jack on the Ringer Sensor into the 'MIC' port on the EHS 550.



Your EHS 550 will now be ready for use with your Agent W860 or W880 and Alcatel deskphone. If you encounter any problems setting up or operating your products, please call Agent headsets on 0845 873 8085.